

# OMEGA Floor Ceiling with Top Discharge Condensing Unit

## SUBMITTAL DATA

**208~230V/1/60Hz**

Job: \_\_\_\_\_  
 Location: \_\_\_\_\_  
 Schedule No.: \_\_\_\_\_  
 System Designation: \_\_\_\_\_

Engineer: \_\_\_\_\_  
 Architect: \_\_\_\_\_  
 Date: \_\_\_\_\_  
 For:      Reference      Approval      Review      Construction

### FEATURES

#### Outdoor

- |                                        |                              |                             |
|----------------------------------------|------------------------------|-----------------------------|
| • High Efficiency & Energy Saving      | • Super Quiet Operation      | • Compact Body.             |
| • Reliable and well-known compressors. | • Electronic Expansion Valve | • Easy to Install the Unit. |

#### Indoor

- |                         |                              |                         |
|-------------------------|------------------------------|-------------------------|
| • Flexible Installation | • Auto-Swing Function        | • Self-Diagnostic       |
| • Wide-Angle Air Flow   | • Dual Direction of Drainage | • Three Level Fan Speed |

## 1. Specifications

### IEFC - Floor Ceiling Indoor Unit

CEILING FLOOR TYPE				
Model name	Ceiling Floor Indoor		IEFC836N0A-LWI105	IEFC860N0A-LWI160
Power supply		V/Ph/Hz	208~230V/60Hz/1ph	208~230V/60Hz/1ph
Cooling	Capacity	Btu/h	36000	54000
	Capacity	W	10548	15822
	Input	W	4200	6500
	Rated current	A	19.0	29.5
	SEER		16	18
Indoor coil	Number of row		3	3
	Fin spacing	mm	1.5	1.5
	Fin material		Hydrophilic & Louver Fin	Hydrophilic & Louver Fin
	Tube outside diameter	mm	φ7	φ7
	Tube material		Innergroover tube type	Innergroover tube type
	Coil length x height x width	mm	940*294*38.1	1300×294×37.8
	Number of circuit		7	10
Indoor fan motor	Brand		Lifeng	Lifeng
	Model		RD(AL)132HA	RD40HU
	Motor type		DC motor	DC motor
	Input	W	166	200
	Running current	A	0.8	0.9
	Capacitor	uF	/	/
	Speed (Hi/Me/Lo)	rpm	1400/1200/1100	1350/1260/1170
Indoor air flow (Hi/Me/Lo)		m <sup>3</sup> /h	1650/1380/1120	2180/2070/1900
Indoor noise level (Hi/Me/Lo)		dB(A)	51/46/44	54/52/50
Indoor dimension	Unit (WxHxD)	mm	1275x235x675	1635x235x675
	Packing (WxHxD)	mm	1350x305x748	1710×305×748
Indoor weight	Net	kg	30	38
	Gross	kg	35	43
Refrigerant	Type		R410a	R410a
Refrigerant pipe	Liquid side	mm	9.52	9.52
	Gas side	mm	15.88	19.05
Drainage water pipe diameter		mm	OD25	OD25
Operation temperature range		°C	16~31	16~31
Operation Control			Remote controller	Remote controller

**Notes:**

1. Nominal cooling capacities are based on the following conditions:

Indoor temp: 26.7°CDB, 19.4°CWB; Outdoor temp: 35°CDB; Equivalent ref. Piping: 5m(horizontal)

2. Actual noise level may differ, depending on the room structure, etc, since these noise values are from an anechoic room

## 1. Specifications

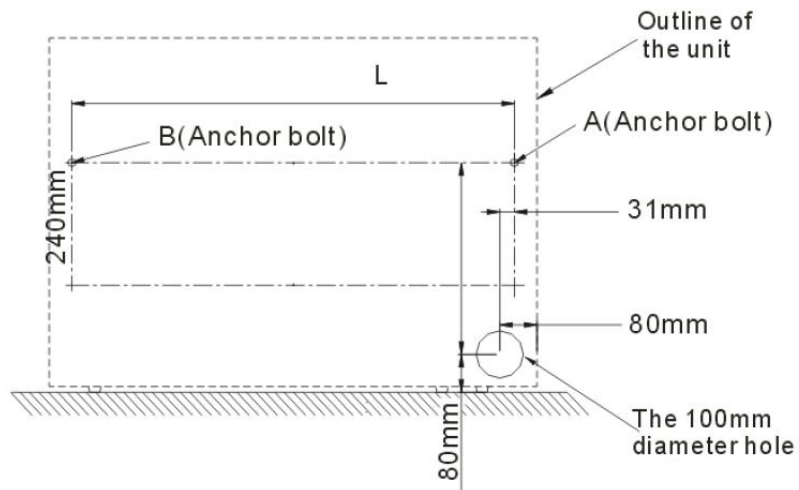
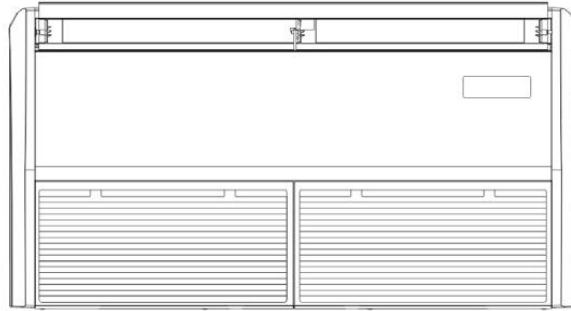
### ICVC - Outdoor Unit

UNIVERSAL OUTDOOR UNIT			Z2U30308000097	Z2U30308000098
<b>Model name</b>		<b>Universal Outdoor Unit</b>	<b>ICVC836N0A-LHI105</b>	<b>ICVC860N0A-LHI160</b>
Power supply		V/Ph/Hz	208~230V/60Hz/1ph	208~230V/60Hz/1ph
Max. input consumption		W	4400	6700
Max. current		A	20	30.5
Starting current		A	/	/
Max Operating Pressure(MPa)	Discharge	MPa	4.2	4.2
	Suction	MPa	1.5	1.5
Compressor	Brand		GMCC	HIGHLY
	Model		KTM240D43UMT	GTH420SKPC8DQ
	Type		Rotary	Rotary
	Capacity	W	7740	11800
	Input	W	2065	3580
	Rated current(RLA)	A	9.4	15.8
	Locked rotor Amp(LRA)	A	/	/
	Thermal protector		/	/
	Capacitor	mF	/	/
	Refrigerant oil	ml	620	1050
Outdoor coil	Number of row		2	2
	Fin spacing	mm	1.2	1.2
	Fin material		Louver or Corrugated Fin	Louver or Corrugated Fin
	Tube outside diameter	mm	φ5	φ5
	Tube material		Innergroover tube type	Innergroover tube type
	Coil length x height x width	mm	2187×585×23.2	2187×800×23.2
	Number of circuit		4	10
Outdoor motor	Motor type		DC motor	DC motor
	Brand		BROADOCEAN	BROADOCEAN
	Model		ZW511D000018L	ZW511D000018L
	Capacitor	mF	/	/
	Speed	rpm	1000	1050
Outdoor air flow		m <sup>3</sup> /h	5500	7000
Outdoor noise level		dB(A)	61	62
Outdoor dimension	Unit (WxHxD)	mm	740×633×740	740×843×740
	Packing (WxHxD)	mm	769×656×769	769×865×769
Outdoor weight	Net	kg	52	66
	Gross	kg	57	71
Refrigerant	Type		R410a	R410a
	Charge	g	2300	3000
Throttle type			electronic expansion valve	electronic expansion valve
Refrigerant pipe	Liquid side	mm	9.52	9.52
	Gas side	mm	15.88	19.05
	Max. refrigerant pipe length	m	25	30
	Max. difference in level	m	15	20
Ambient temperature range	Cooling	°C	5~48	5~48
	Heating	°C	/	/

2. Dimensional Drawings

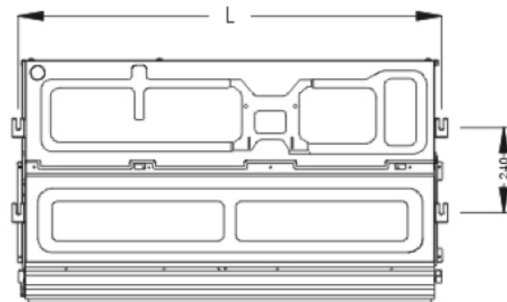
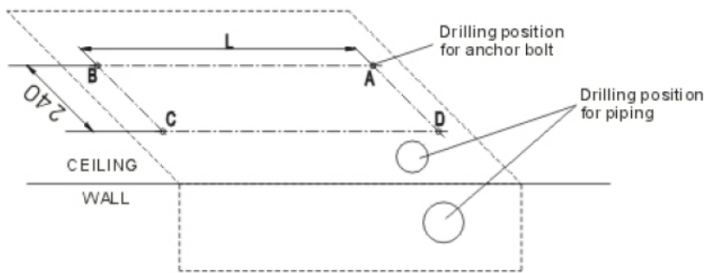
IEFC - Floor Ceiling Indoor Unit

Unit:mm



NOTE:

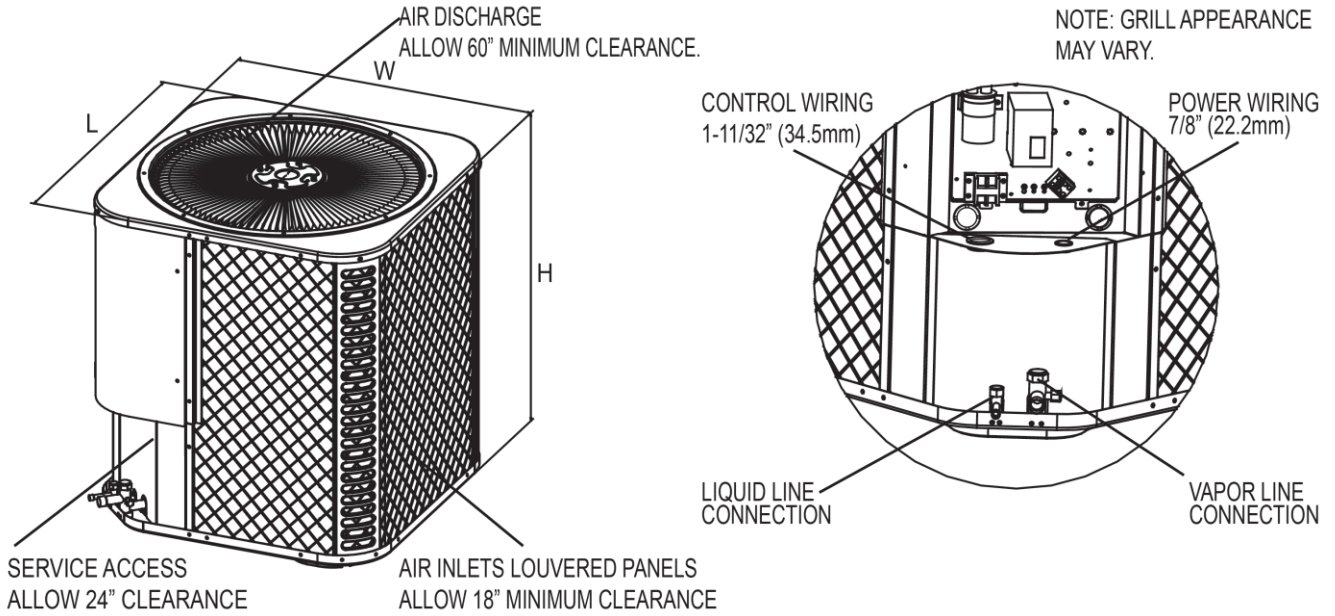
Cooling Capacity	18000 Btu/hr	24000 Btu/hr	36000 Btu/hr	48000 Btu/hr
Dimension				
L	980mm	980mm	1200mm	1560mm



**2. Dimensional Drawings**

**ICVC - Outdoor Unit**

Unit:mm



Unit Model	Dimensions (Inches)			Refrigerant Connection Service Valve Size	
	"H" in [mm]	"W" in [mm]	"L" in [mm]	Liquid in	Vapor in
ICVC836N0A-LHI105	33-3/16(843)	29-1/8(740)	29-1/8(740)	3/8	7/8
ICVC860N0A-LHI160	33-3/16(843)	29-1/8(740)	29-1/8(740)	3/8	7/8

### 3. Electrical Characteristics

#### Electrical Data - ICVC& IEFC

##### Floor Ceiling - IEFC

Ceiling & floor	Indoor Units				Indoor Fan Motor
Model	Hz	Voltage	Min.	Max.	KW
OT-18, 24	50/60	220-230V	198V	242V	0.166
OT-24, 30	50/60	220-230V	198V	242V	0.100pφ

##### Outdoor Unit - IC C

Model	Outdoor Units				Outdoor Fan Motor
	Hz	Voltage	Min.	Max.	kW
OT-18, 24	50/60	220-230V	198V	242V	0.118
OT-24, 30	50/60	220-230V	198V	242V	0.217